

EASY ROOF INDUSTRIAL

IN ROOF MOUNTING SYSTEM FOR ROOF WITH PURLINS



COMPATIBLE
WITH 60 CELLS - 6" "
MODULES

INDUSTRIAL
ROOF SOLUTION

CONSTRUCTION
MADE OF WOOD,
METAL, CONCRETE

PITCH
FROM 8° TO 40°

NO CUTS
NO SEAL

PORTRAIT
OR
LANDSCAPE

KNOW MORE :



ASSEMBLY INSTRUCTION :



CONTACT : IRFTS

26, rue du 35^{ème}
Régiment d'Aviation
69500 BRON
(FRANCE)

+ 33 (0)4 78 38 83 10

info@irfts.com

EASY ROOF INDUSTRIAL is now able to offer a solution to meet the specific characteristics of most types of roofing, Portrait or Landscape found amongst **industrial and agricultural buildings** with fixing on metallic and wooden purlins.

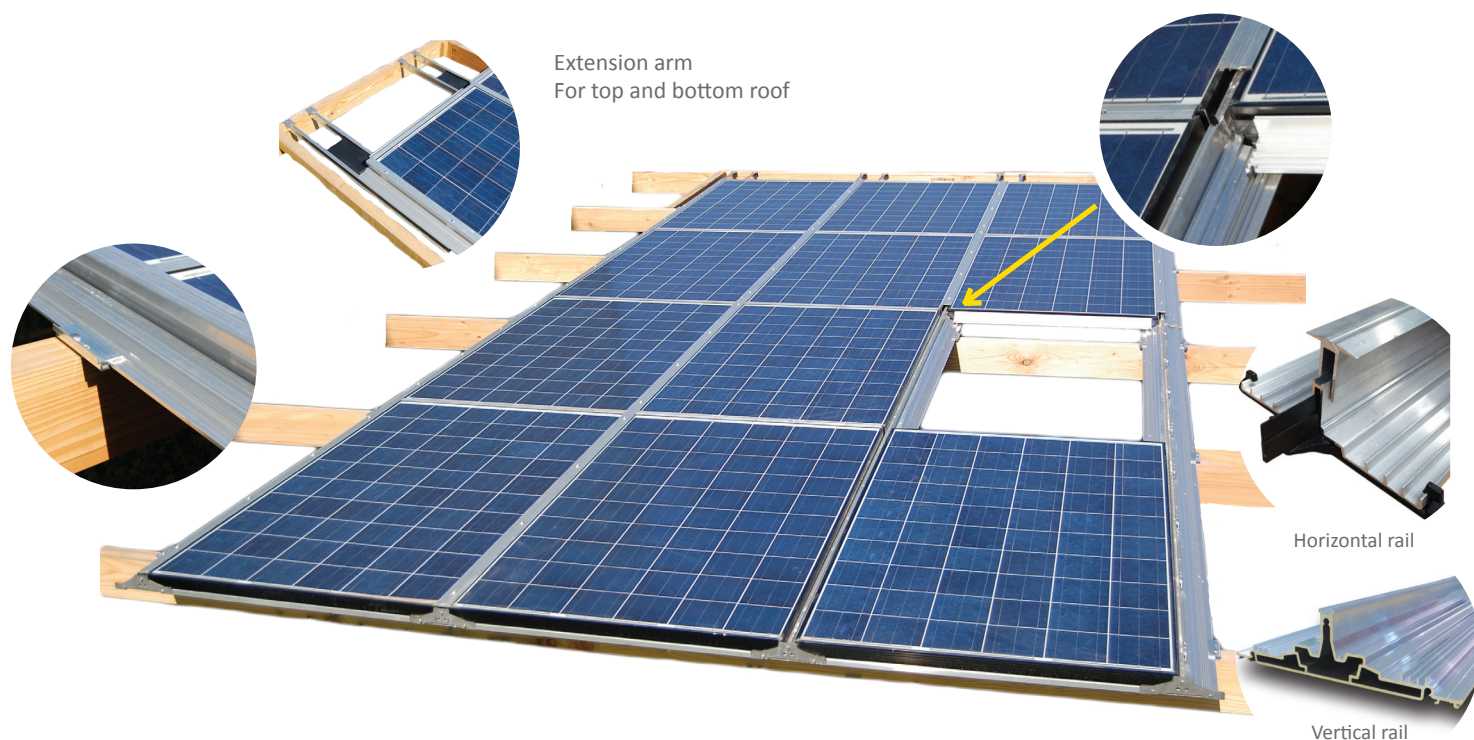
You will be able to integrate **quickly and easily** in Portrait / Landscape style, the great majority of PV panels available on the market thanks to its all- purpose components.

All components are standard to help you to face any unforeseeable events on a building site !
(i.e. : lay-out modification)

Save time and money thanks to its inventive process of splint bar with no cuts and no seals.

EASY ROOF INDUSTRIAL

IN ROOF MOUNTING SYSTEM FOR ROOF WITH PURLINS



TECHNICAL CHARACTERISTICS AND ADVANTAGES

Versatility	<ul style="list-style-type: none"> Compatible with all types of roof construction : wood, metal, concrete Maximum distance between purlins: 1.6m Extension arm to reach the next purlin All designs and layouts: Complete or part roof systems, any position on the roof Solution for roofs with slopes between 8 and 40 degrees
Simplicity and time saving	<ul style="list-style-type: none"> Adjustable assembly up to MW without cut on site A clever splint system ease the assembly for a perfect mechanical strength Minimal amounts of parts are required for the assembly of the structure
Storage/ Distribution	<ul style="list-style-type: none"> Parts are universal for all size modules and all fields PV configurations
Reliability	<ul style="list-style-type: none"> Integrated system with no seals Aluminium fixings and stainless steel fastenings to provide an ultimate resistance to extreme weather conditions
Design	<ul style="list-style-type: none"> Integrated system to provide a seamless and visually stunning installation Available in mill aluminium or black finish
Performance	<ul style="list-style-type: none"> Fully ventilated concept to optimise the energy efficiency of the installation
Tests and standards	<ul style="list-style-type: none"> 1200 joules resistance UV, hailstone, corrosion, heat, snow and wind (Snow load up to 3800 Pa for max 1000 m altitude)
Certifications	<ul style="list-style-type: none"> New Technical Investigation certification 10 year manufacturer warranty
Compatibility	<ul style="list-style-type: none"> 60 cells 6" framed PV module⁽¹⁾
Formats	<ul style="list-style-type: none"> Portrait or Landscape

⁽¹⁾ To know more, please consult compatibility document «EASY ROOF INDUSTRIAL» available on : www.irfts.com

MEMBER OF :



Your nearest contact :



www.irfts.com